



Re-burn a Network USB Hardware Lock for WMS

Applies to WMS versions: 8.4, 9.0, 9.1, 10.0, 10.1
Please contact Aquaveo for help
with other versions

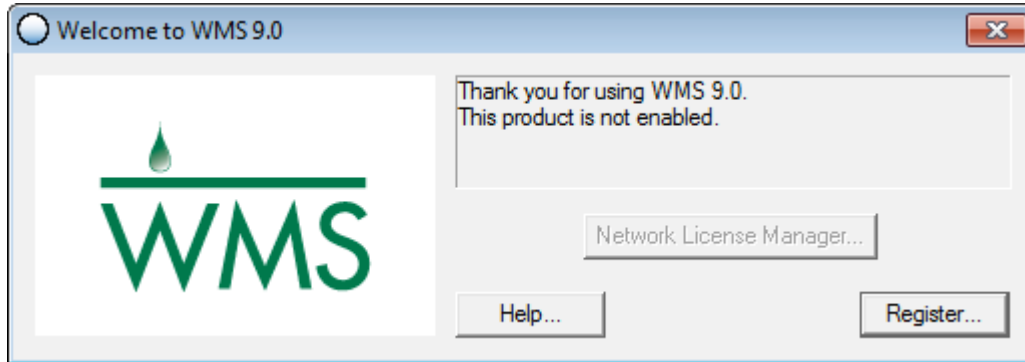
We're here to help – Please contact us with any questions

Sales & Billing: +1(801) 691-5528
Technical Support: +1(801) 691-5530

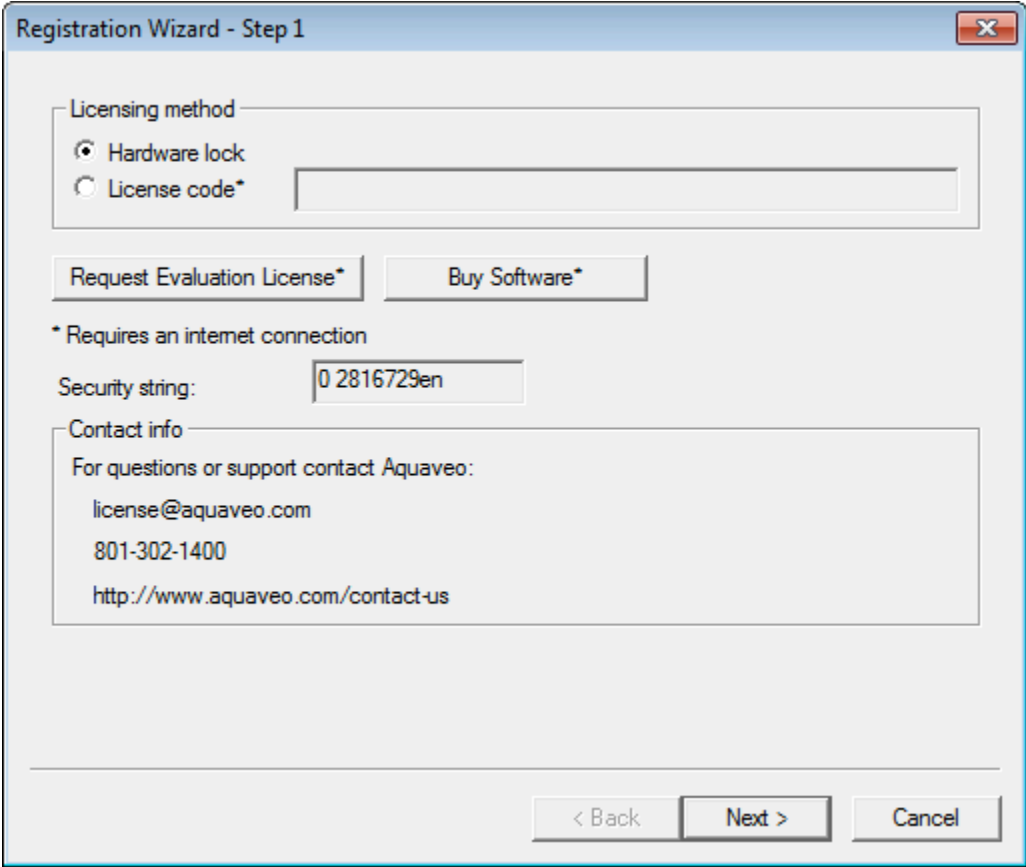
sales@aquaveo.com
support@aquaveo.com

www.aquaveo.com

1. Plug the Aquaveo hardware lock into a computer with hardware lock drivers and WMS installed.
2. Start WMS and select the **Register...** button when the welcome screen appears. If the welcome screen does not appear automatically, select **Register...** from the **Help** menu in WMS.



3. Select **Hardware lock** for the Licensing method and click the **Next >** button.



4. In the Hardware lock options, select **Modify lock on this computer with the following code** and click the **Next >** button.

Registration Wizard - Step 2

Hardware lock options

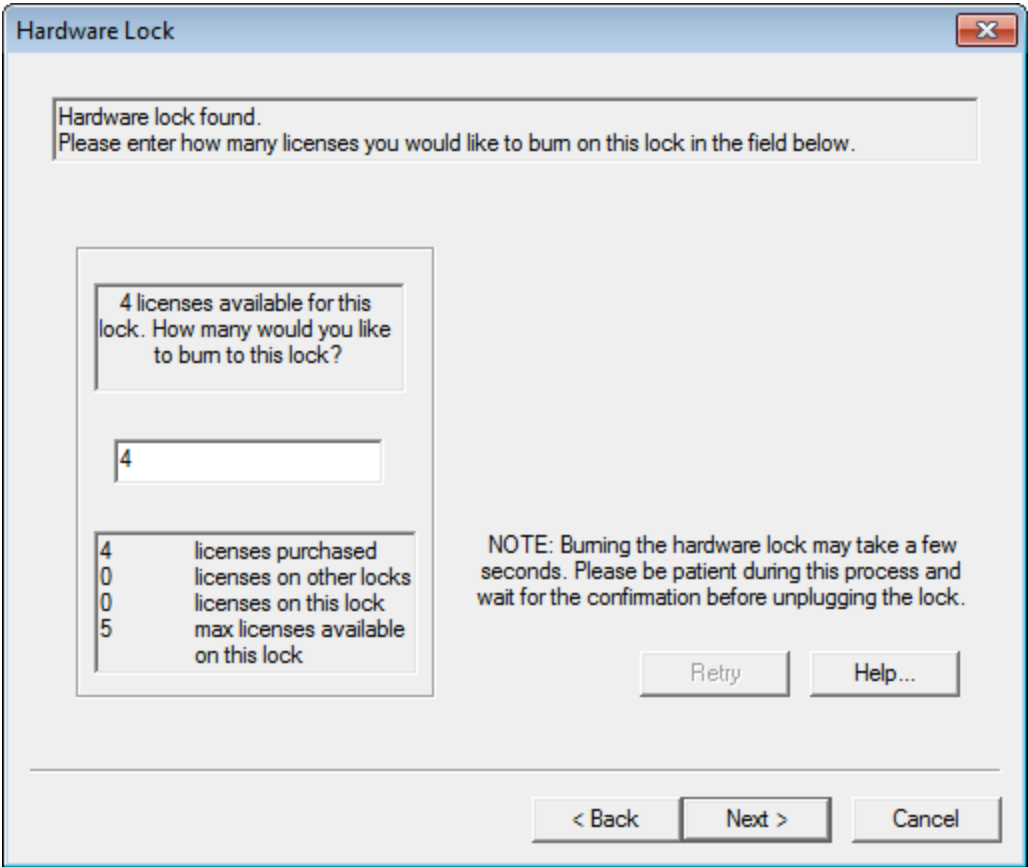
- Get license from a single user lock.
- Get license from a network lock.
- Modify lock on this computer with following code (uses internet):
- Setup Sentinel Server for network locks.

Network lock setting

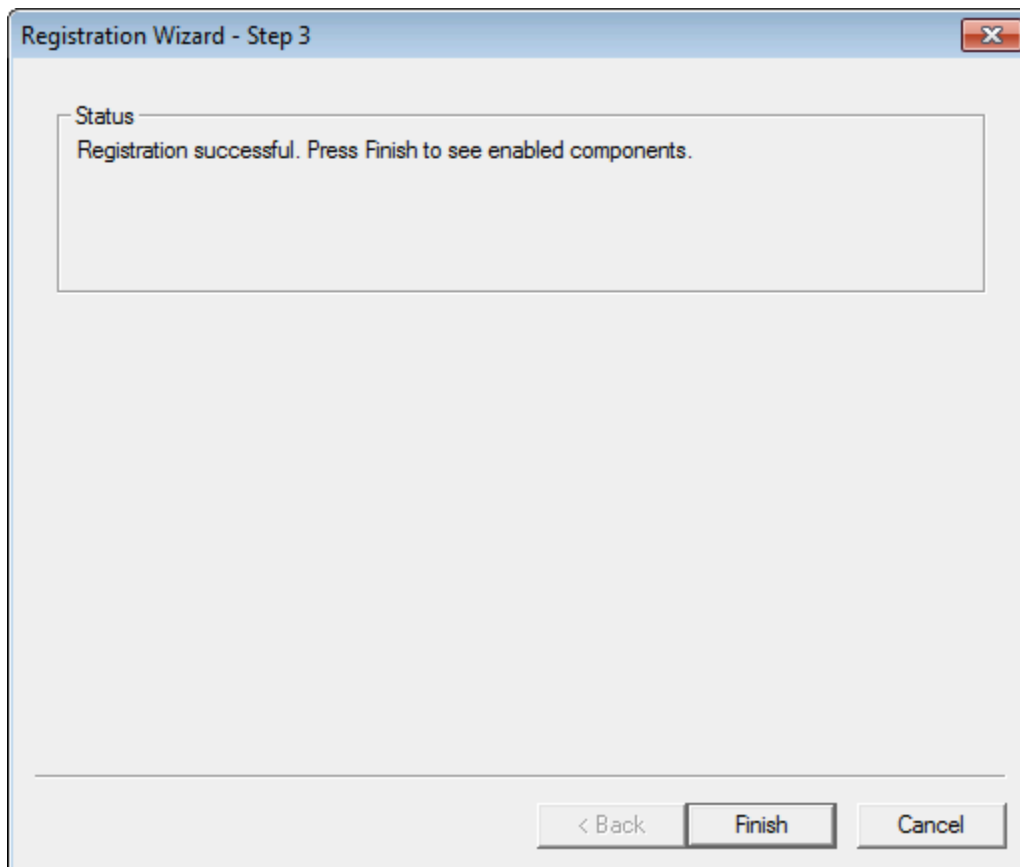
- IP address
- Host name

< Back Next > Cancel

- 5. In the Hardware Lock dialog, enter the number of licenses to burn on the lock. This number is typically the same as the number of licenses purchased and available. Click the **Next >** button to burn the hardware lock.



6. If the registration is successful, click **Finish** to exit the Registration Wizard. Please note that the Registration dialog may not show the enabled components. To verify the enabled components on the network lock, refer to the instructions for registering WMS with a Network Lock.



7. Return the network hardware lock to the computer serving as the license server if necessary.